

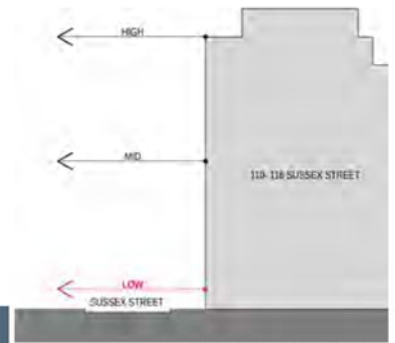
APPENDIX B: VIEW IMPACT ANALYSIS

PREPARED BY FITZPATRICK + PARTNERS AND ARTERRA INTERACTIVE

65-79 SUSSEX STREET SYDNEY

ATTACHMENT A

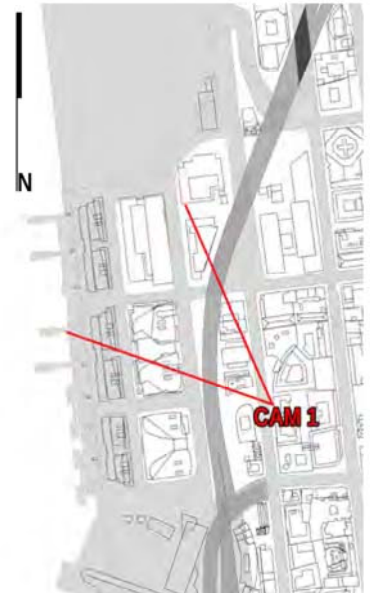
CAM 1: LOW
RL: 13
CAMERA LENS: 35MM



110-116 ELEVATION



EXISTING



KEY PLAN

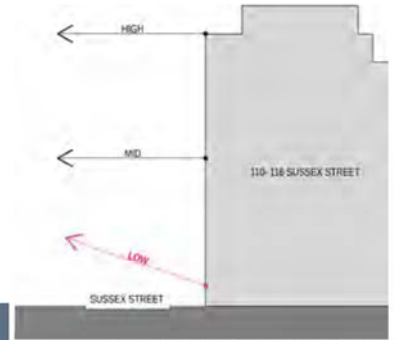


PROPOSED

65-79 SUSSEX STREET SYDNEY

ATTACHMENT A

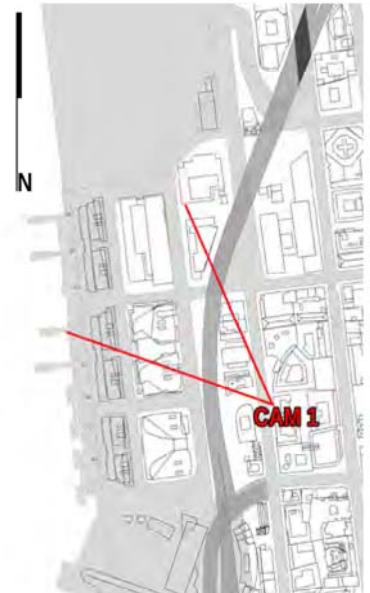
CAM 1: LOW
RL: 13
CAMERA LENS: 35MM



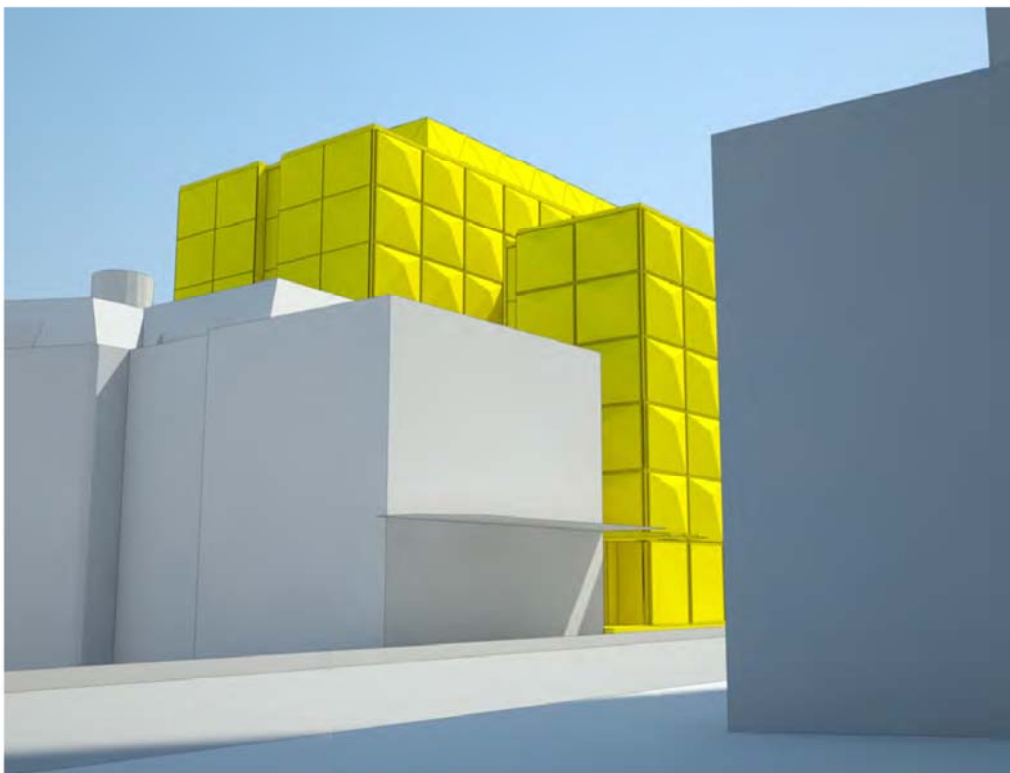
110-116 ELEVATION



EXISTING



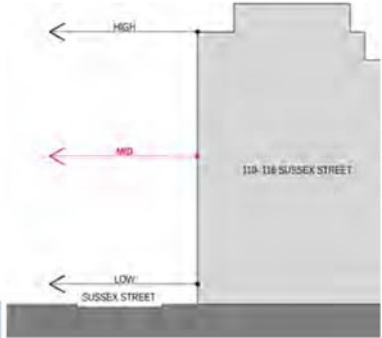
KEY PLAN



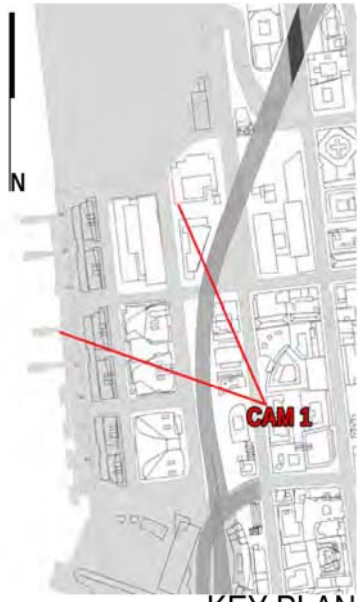
PROPOSED

65-79 SUSSEX STREET SYDNEY

CAM 1: MEDIUM
RL: 45
CAMERA LENS: 35MM



110-116 ELEVATION



KEY PLAN



EXISTING

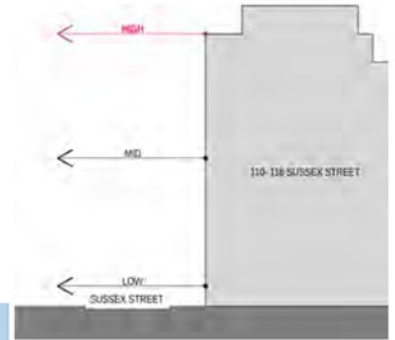


PROPOSED

65-79 SUSSEX STREET SYDNEY

ATTACHMENT A

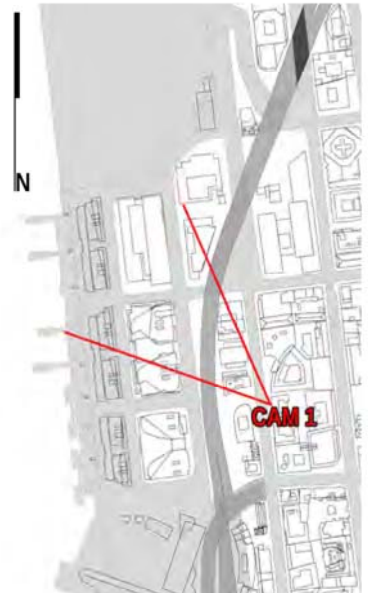
CAM 1: HIGH
RL: 75
CAMERA LENS: 35MM



110-116 ELEVATION



EXISTING



KEY PLAN



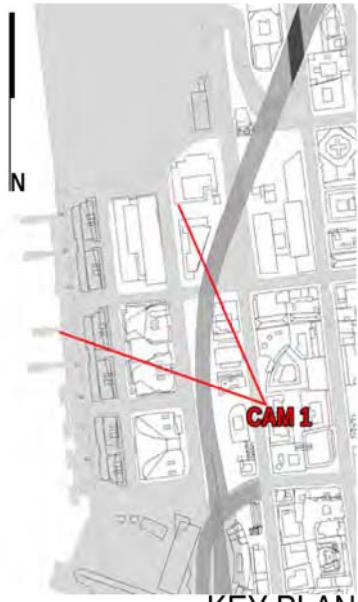
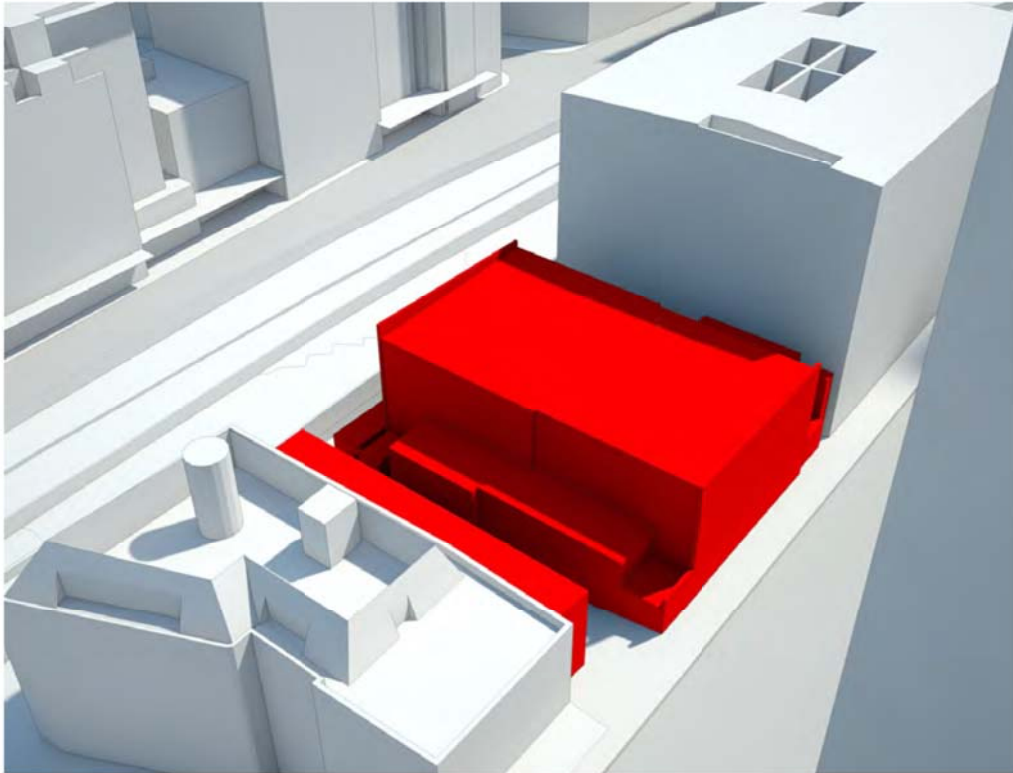
PROPOSED

65-79 SUSSEX STREET SYDNEY

CAM 1: HIGH
RL: 75
CAMERA LENS: 35MM

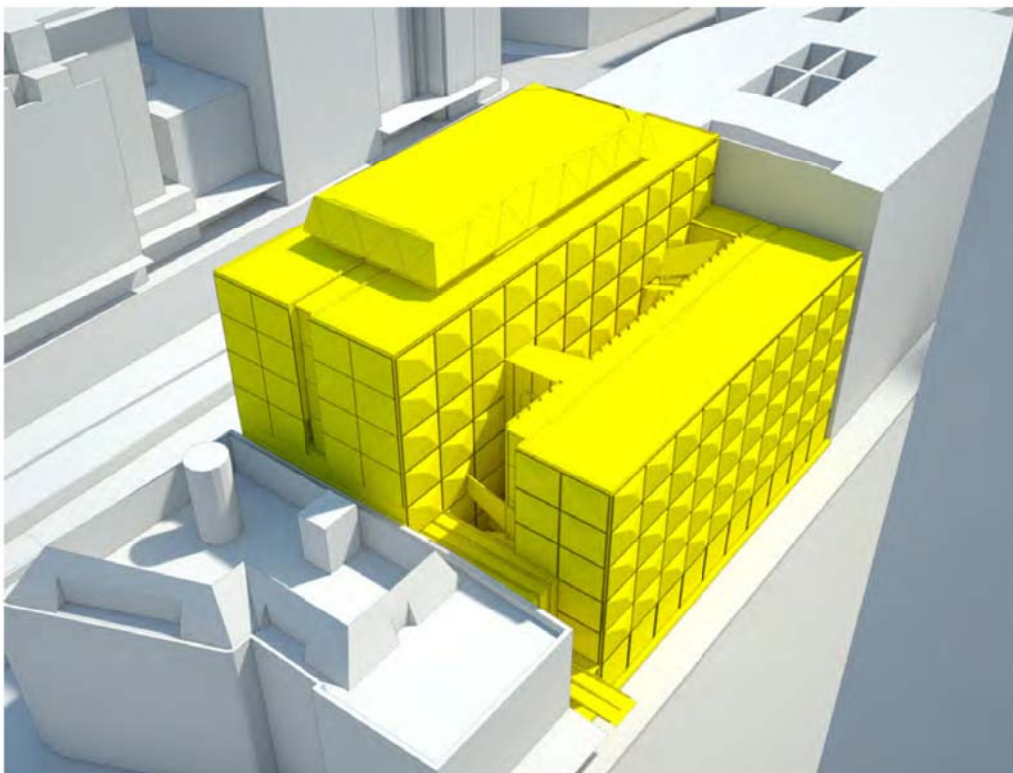


110-116 ELEVATION



KEY PLAN

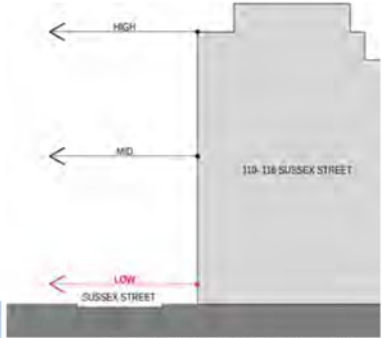
EXISTING



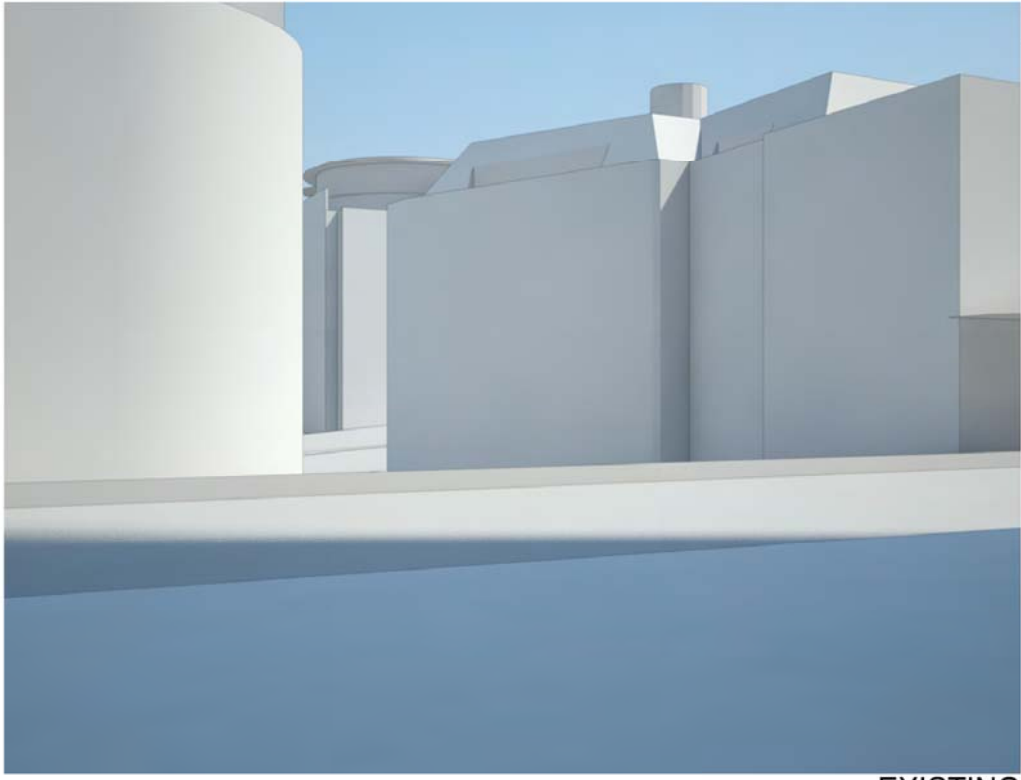
PROPOSED

65-79 SUSSEX STREET SYDNEY

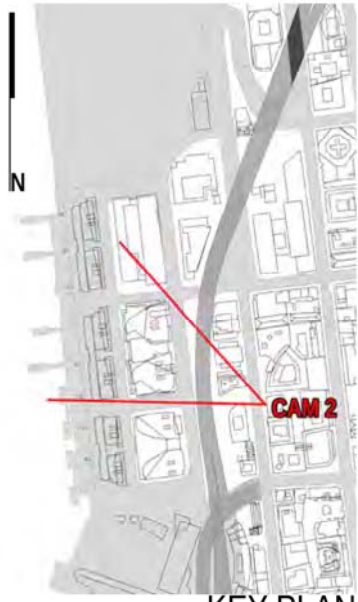
CAM 2: LOW
RL: 13
CAMERA LENS: 35MM



110-116 ELEVATION



EXISTING



KEY PLAN

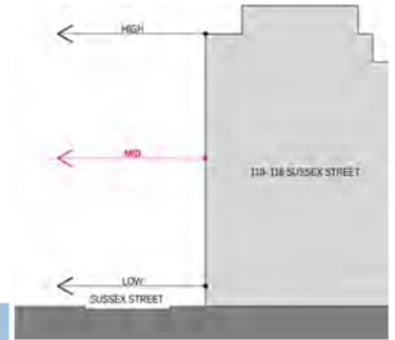


PROPOSED

65-79 SUSSEX STREET SYDNEY

ATTACHMENT A

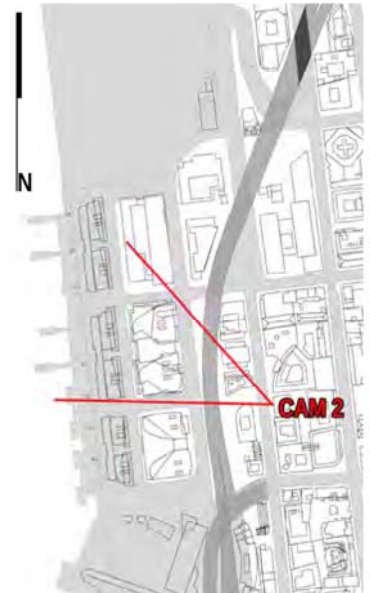
CAM 2: MEDIUM
RL: 45
CAMERA LENS: 35MM



110-116 ELEVATION



EXISTING



KEY PLAN

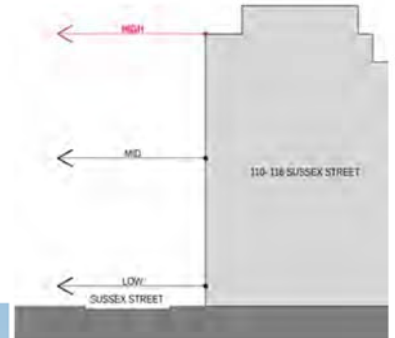


PROPOSED

65-79 SUSSEX STREET SYDNEY

ATTACHMENT A

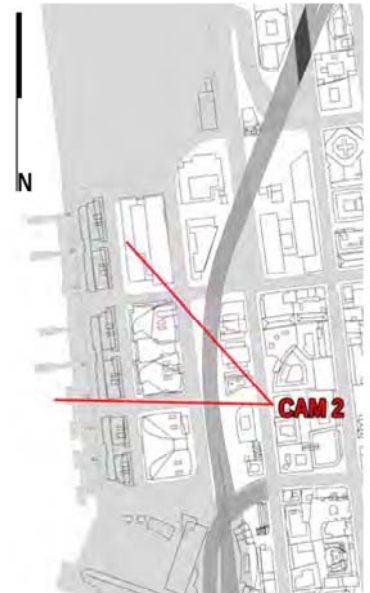
CAM 2: HIGH
RL: 75
CAMERA LENS: 35MM



110-116 ELEVATION



EXISTING



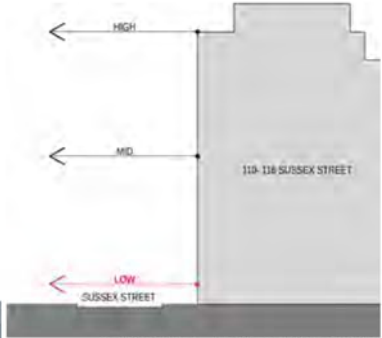
KEY PLAN



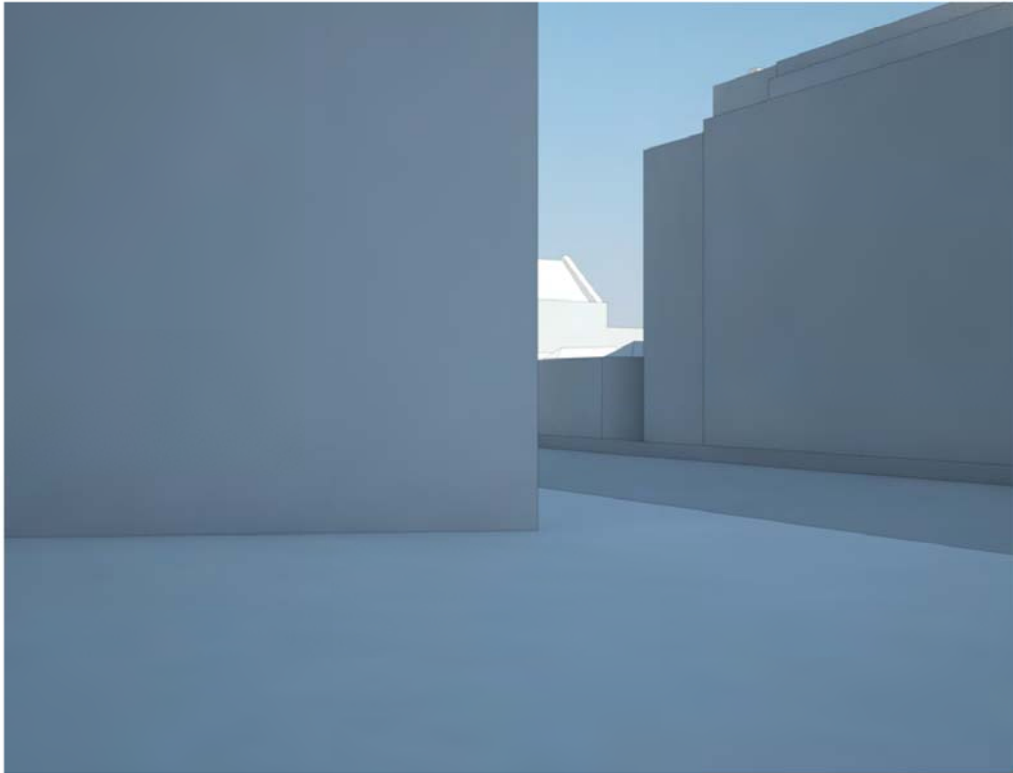
PROPOSED

65-79 SUSSEX STREET SYDNEY

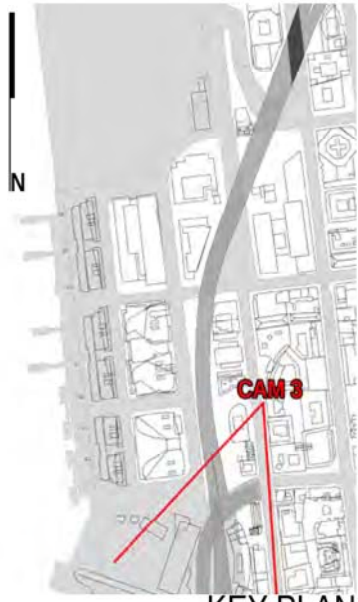
CAM 3: LOW
RL: 13
CAMERA LENS: 35MM



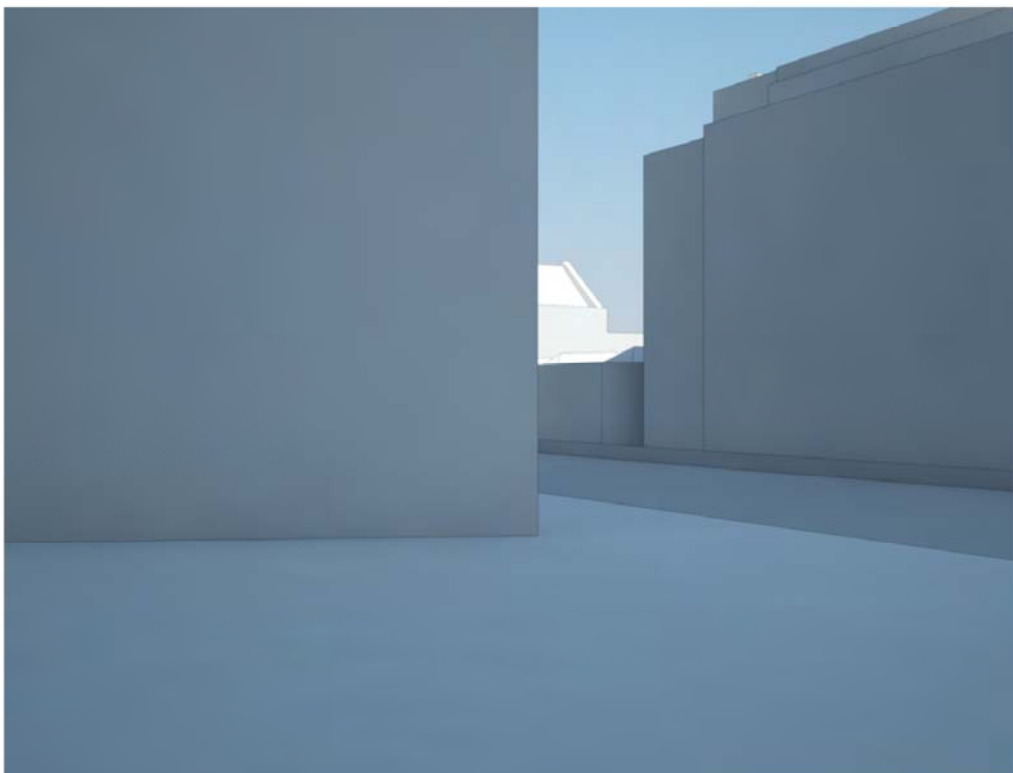
110-116 ELEVATION



EXISTING



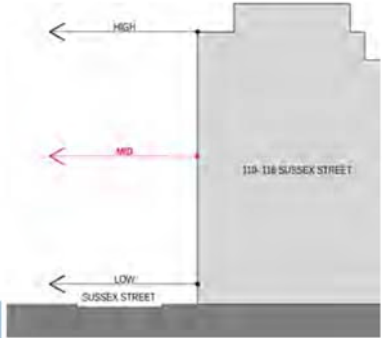
KEY PLAN



PROPOSED

65-79 SUSSEX STREET SYDNEY

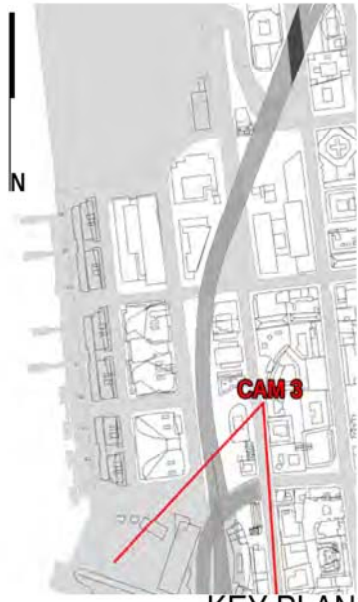
CAM 3: MEDIUM
RL: 45
CAMERA LENS: 35MM



110-116 ELEVATION



EXISTING



KEY PLAN

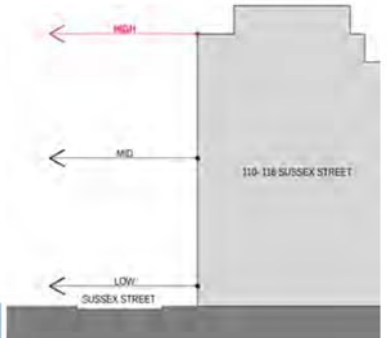


PROPOSED

65-79 SUSSEX STREET SYDNEY

ATTACHMENT A

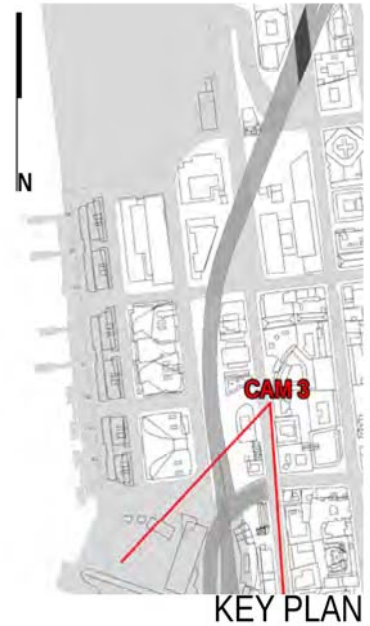
CAM 3: HIGH
RL: 75
CAMERA LENS: 35MM



110-116 ELEVATION



EXISTING



PROPOSED

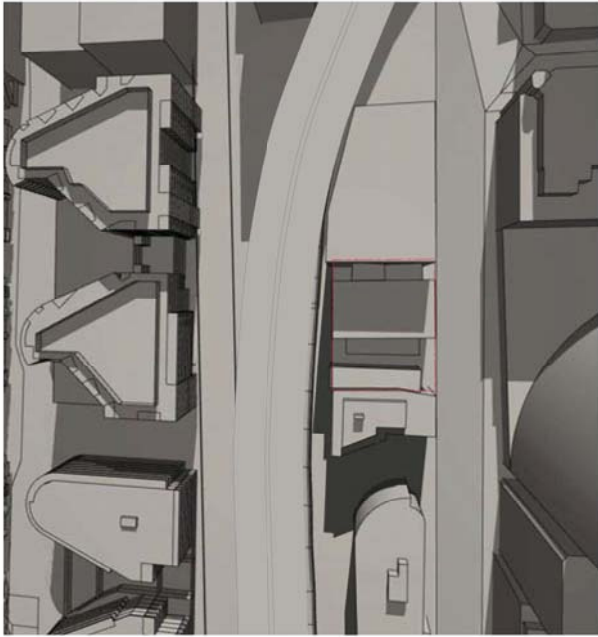
APPENDIX C: SOLAR ANALYSIS

PREPARED BY FITZPATRICK + PARTNERS AND ARTERRA INTERACTIVE



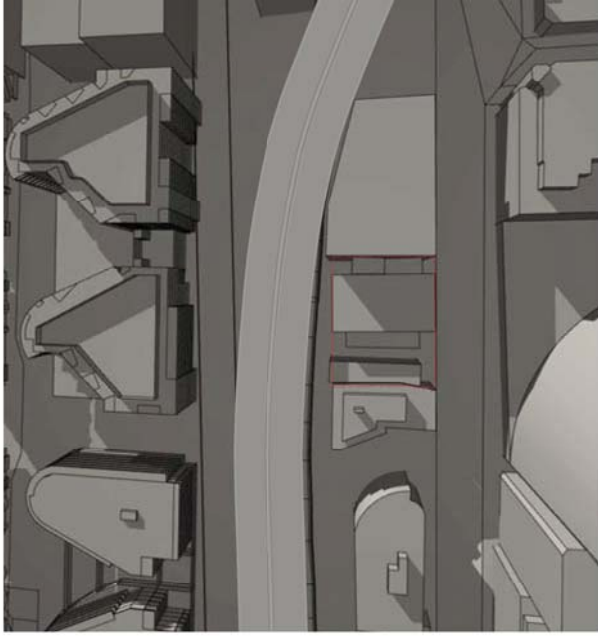
EXISTING - JUNE 21 - 9am

1



EXISTING - JUNE 21 - 12 noon

2



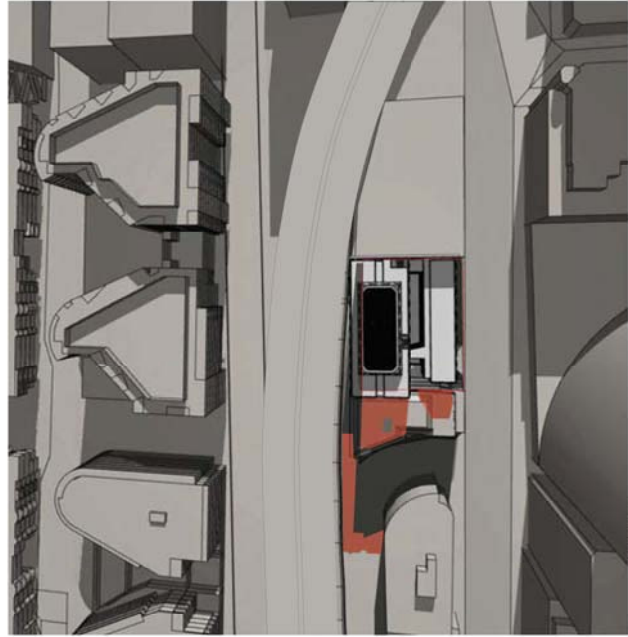
EXISTING - JUNE 21 - 3pm

3



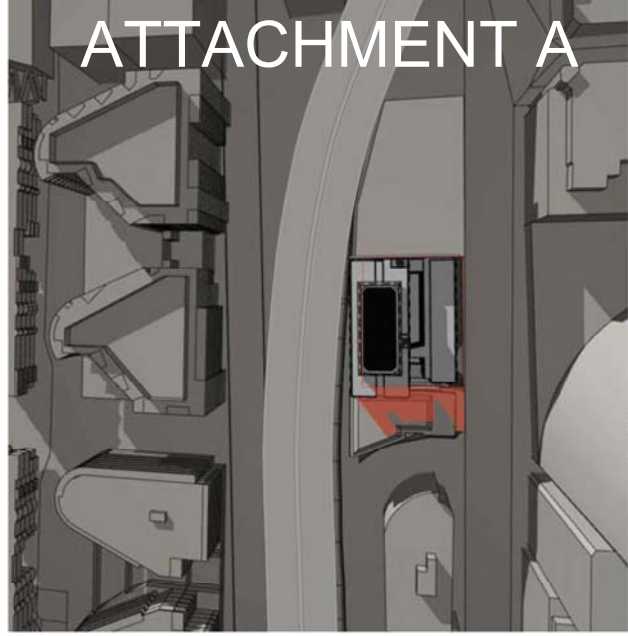
JUNE 21 - 9am

4



JUNE 21 - 12 noon

5



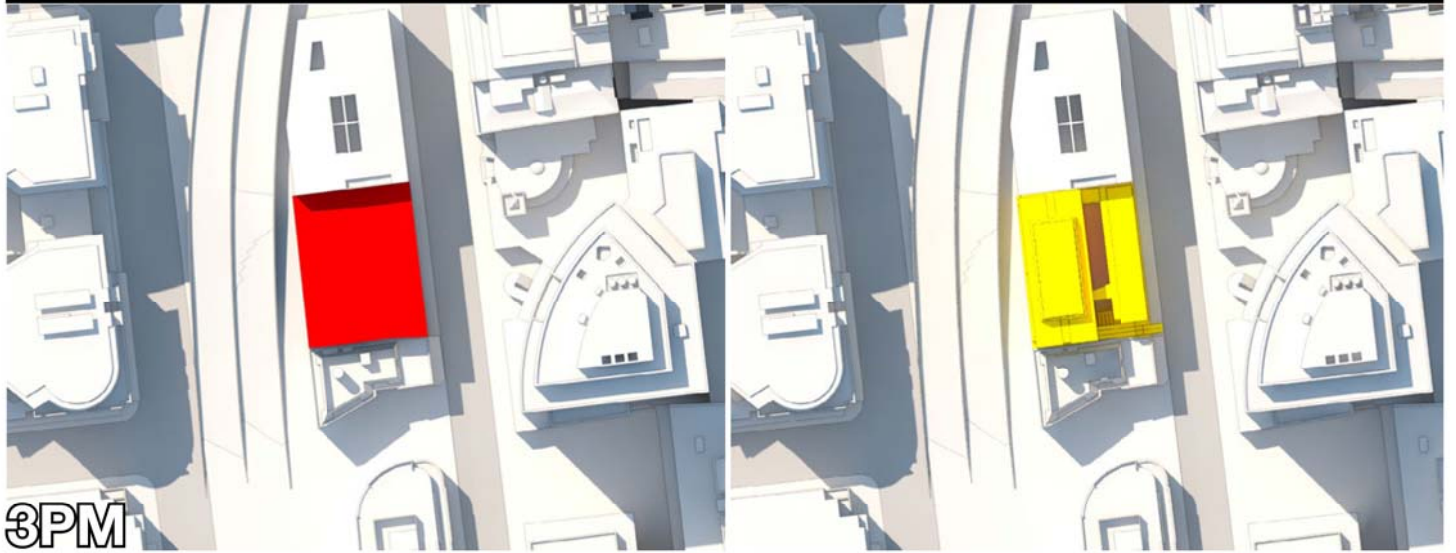
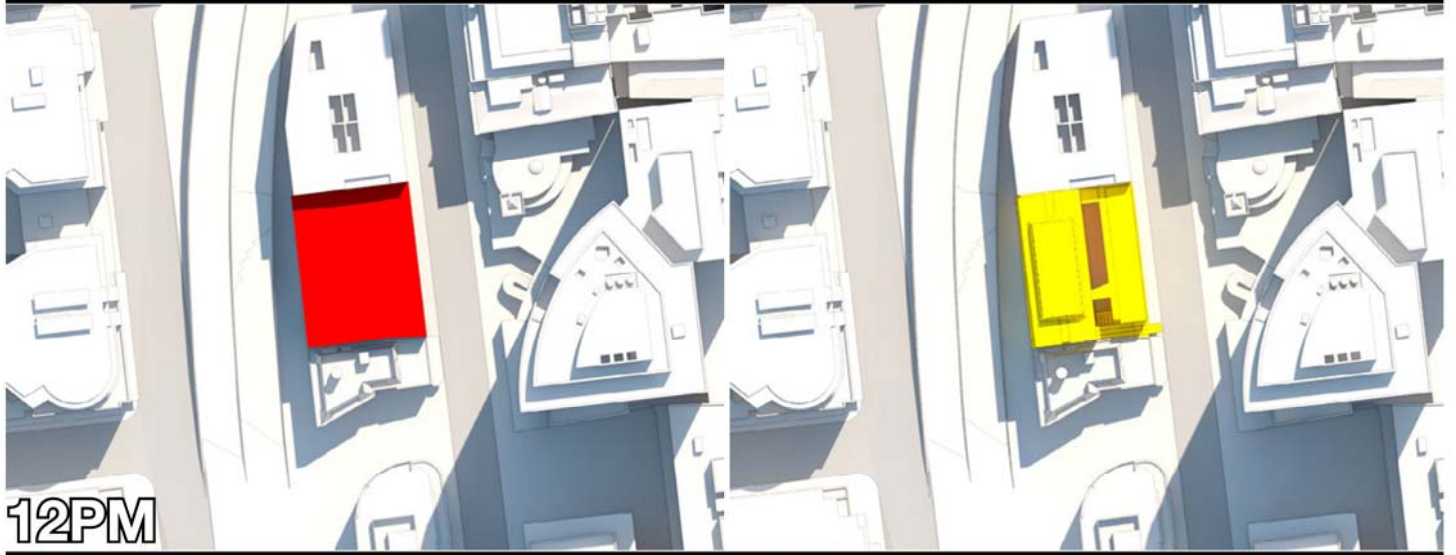
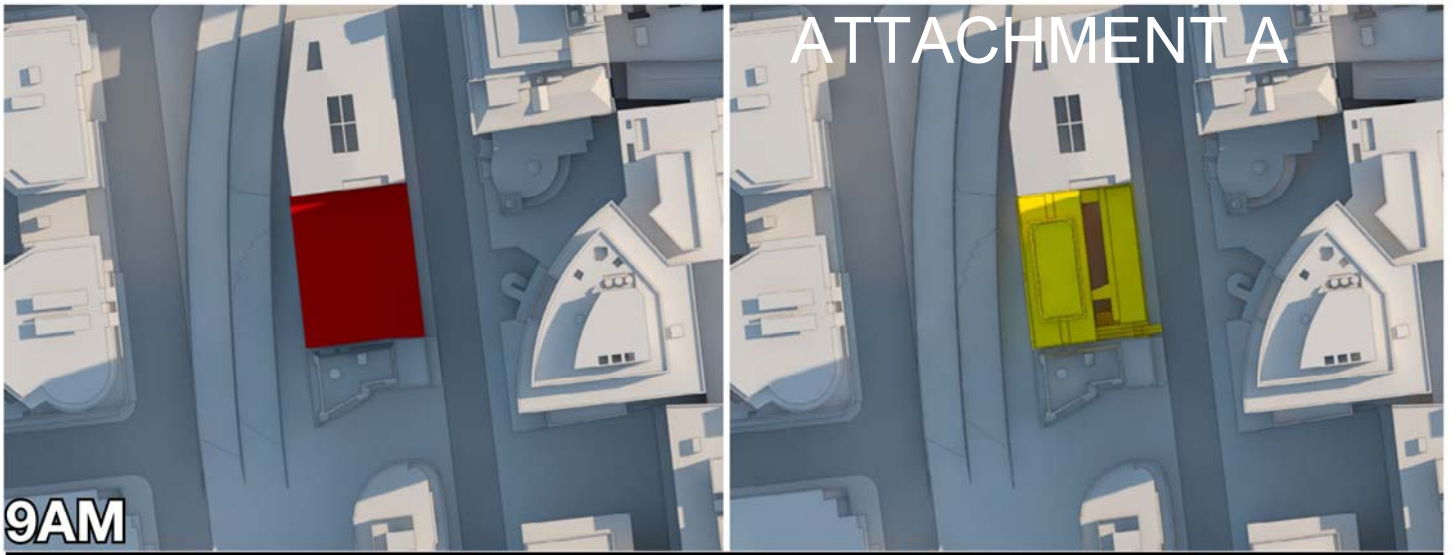
JUNE 21 - 3pm

6

ATTACHMENT A

ADDITIONAL SHADOW STUDY THROUGH PROPOSED DEVELOPMENT

ATTACHMENT A



21 MARCH

INCLUDES DAYLIGHT SAVINGS

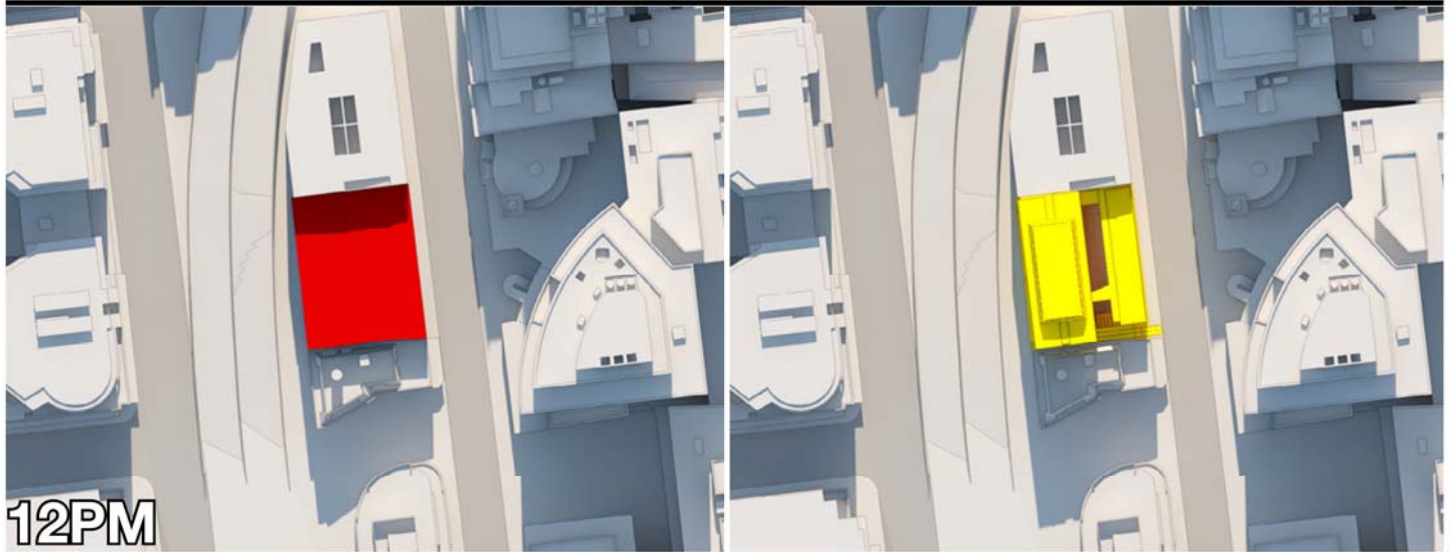
- COMPLIANT SCHEME
- NON COMPLIANT SCHEME



65-79 QUEST SUSSEX STRT, SYDNEY / SUN DIAGRAMS

ATTACHMENT A

9AM

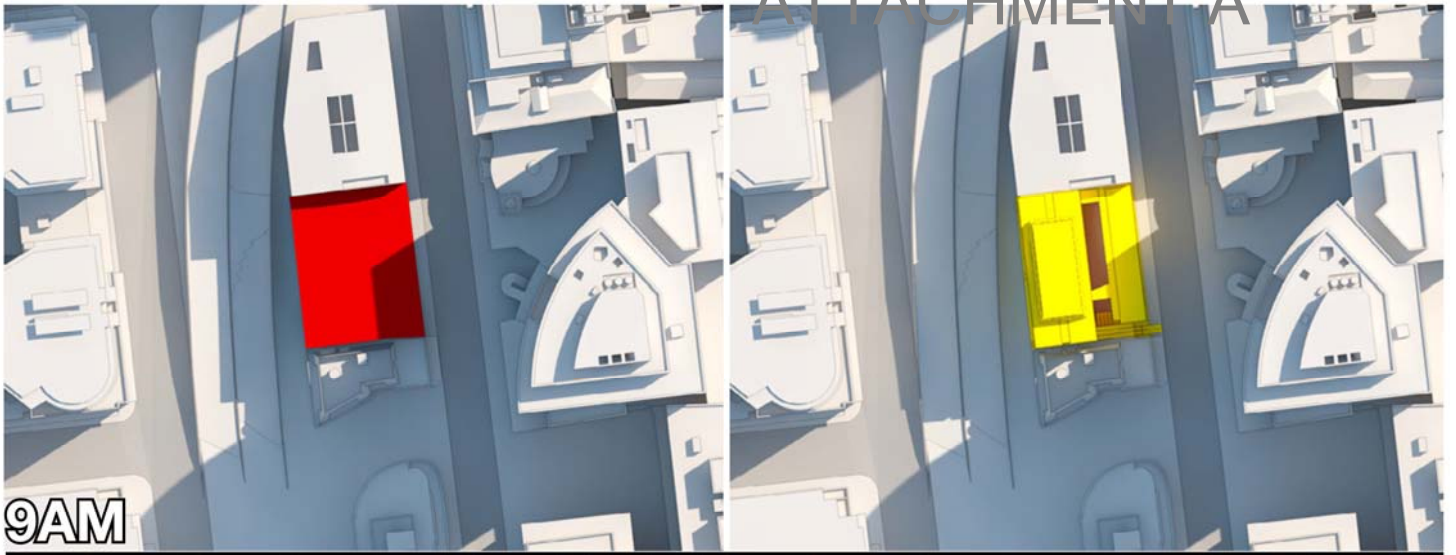


21 JUNE

- COMPLIANT SCHEME
- NON COMPLIANT SCHEME



65-79 QUEST SUSSEX STRT, SYDNEY / SUN DIAGRAMS

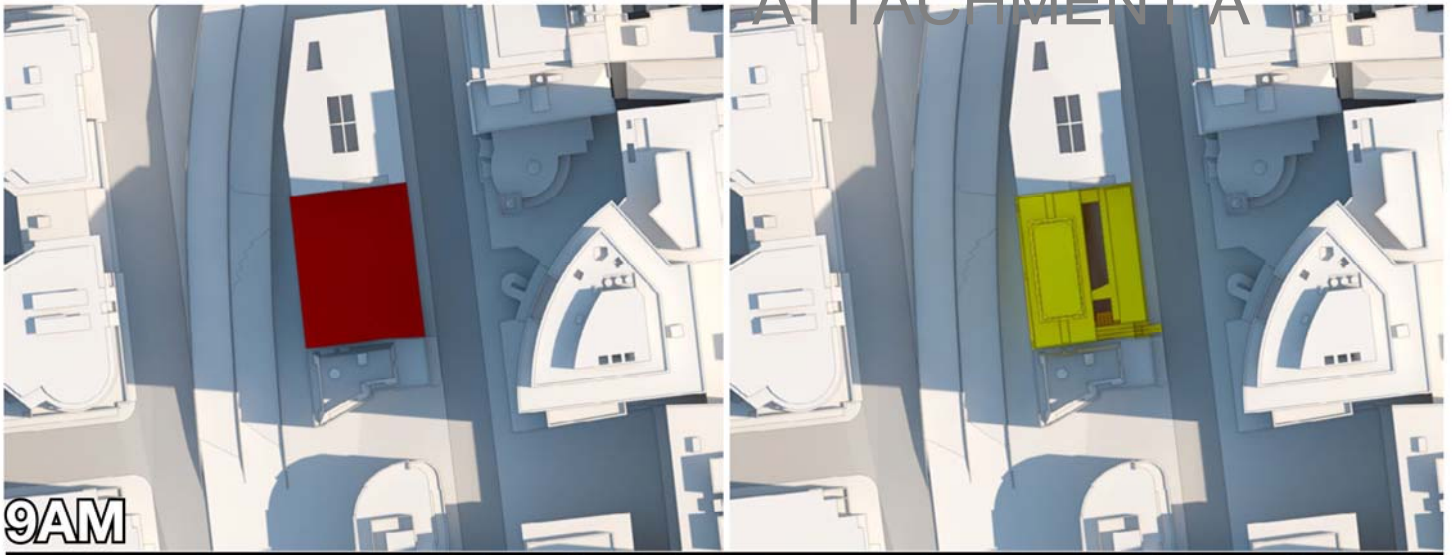


21 SEPTEMBER

- COMPLIANT SCHEME
- NON COMPLIANT SCHEME



65-79 QUEST SUSSEX STRT, SYDNEY / SUN DIAGRAMS



21 DECEMBER

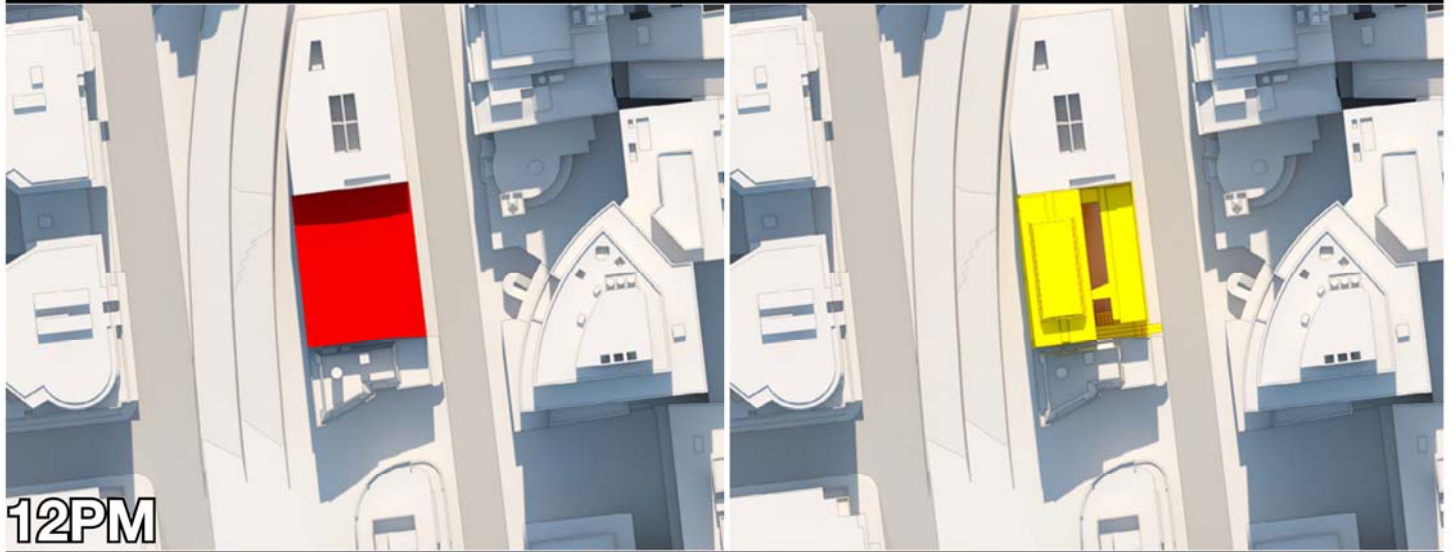
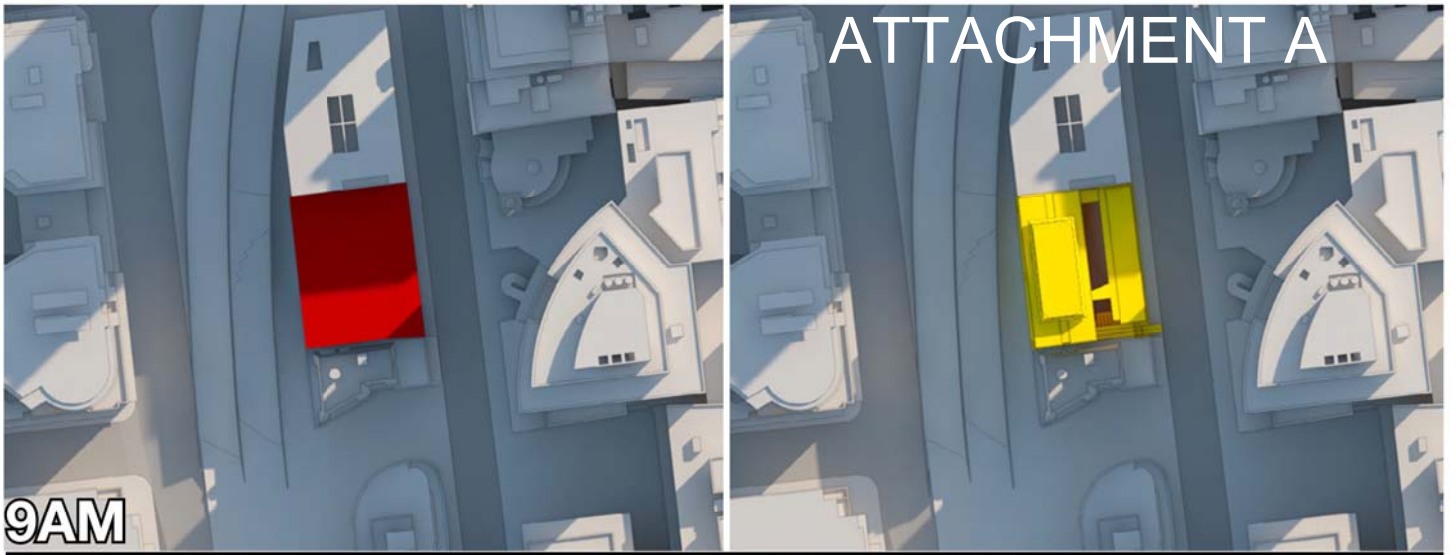
INCLUDES DAYLIGHT SAVINGS

- COMPLIANT SCHEME
- NON COMPLIANT SCHEME



65-79 QUEST SUSSEX STRT, SYDNEY / SUN DIAGRAMS

ATTACHMENT A



10 MAY

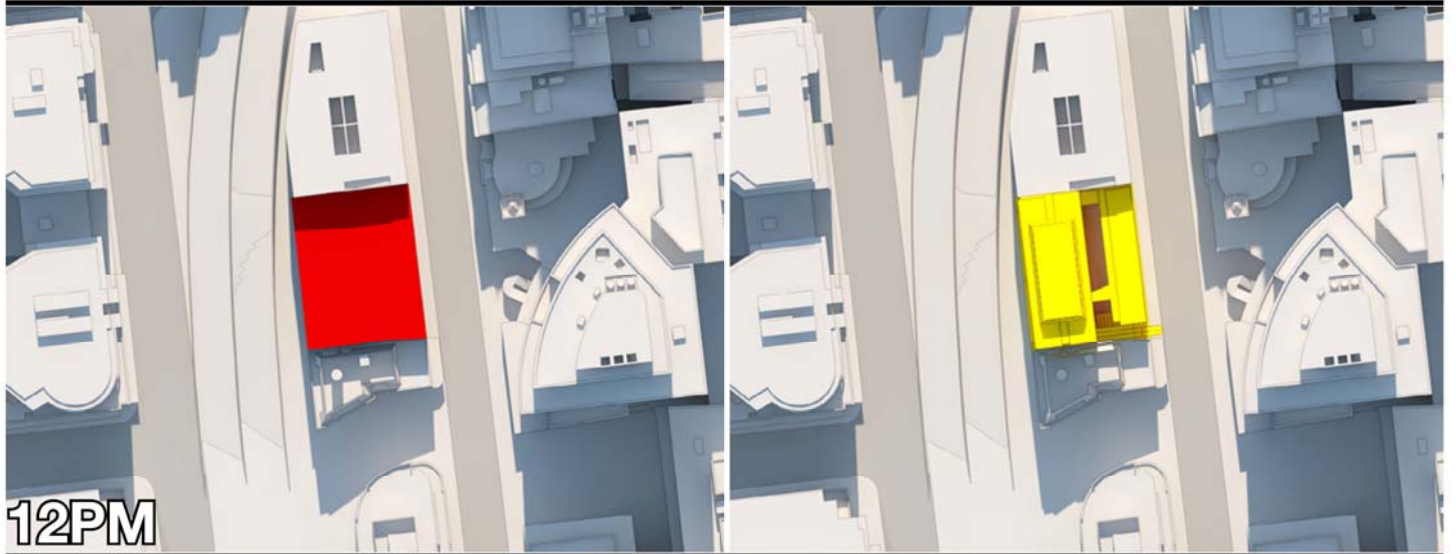
- COMPLIANT SCHEME
- NON COMPLIANT SCHEME



65-79 QUEST SUSSEX STRT, SYDNEY / SUN DIAGRAMS

ATTACHMENT A

9AM



12PM



3PM

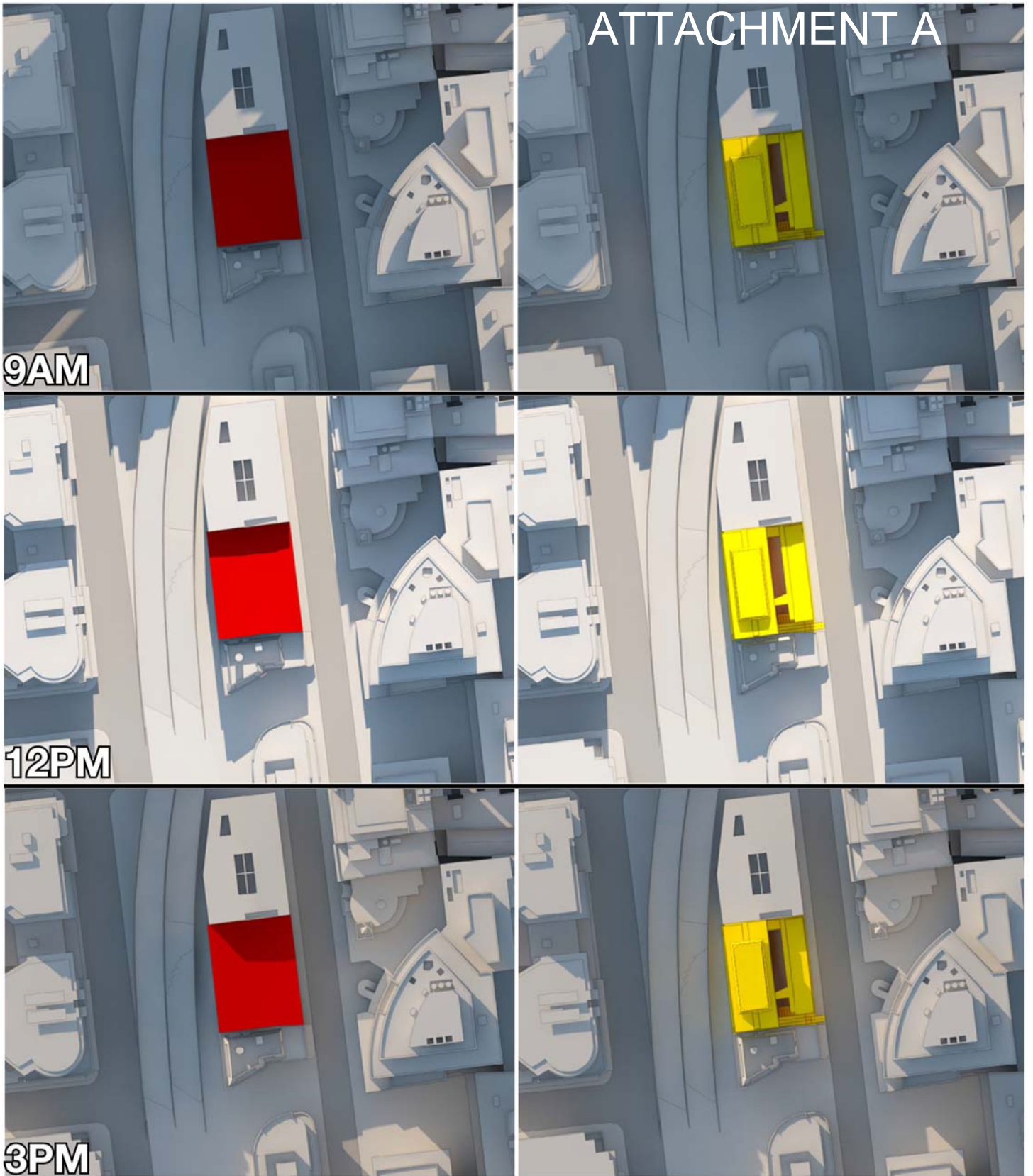
24 MAY

- COMPLIANT SCHEME
- NON COMPLIANT SCHEME



65-79 QUEST SUSSEX STRT, SYDNEY / SUN DIAGRAMS

ATTACHMENT A



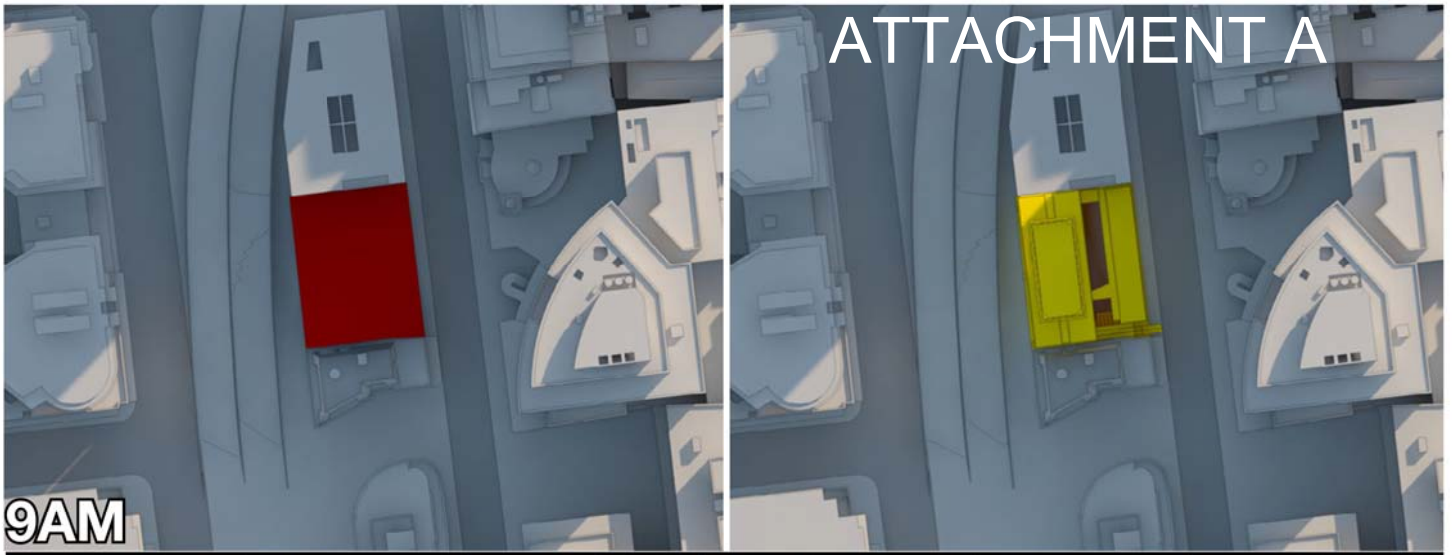
7 JUNE

- COMPLIANT SCHEME
- NON COMPLIANT SCHEME



65-79 QUEST SUSSEX STRT, SYDNEY / SUN DIAGRAMS

ATTACHMENT A



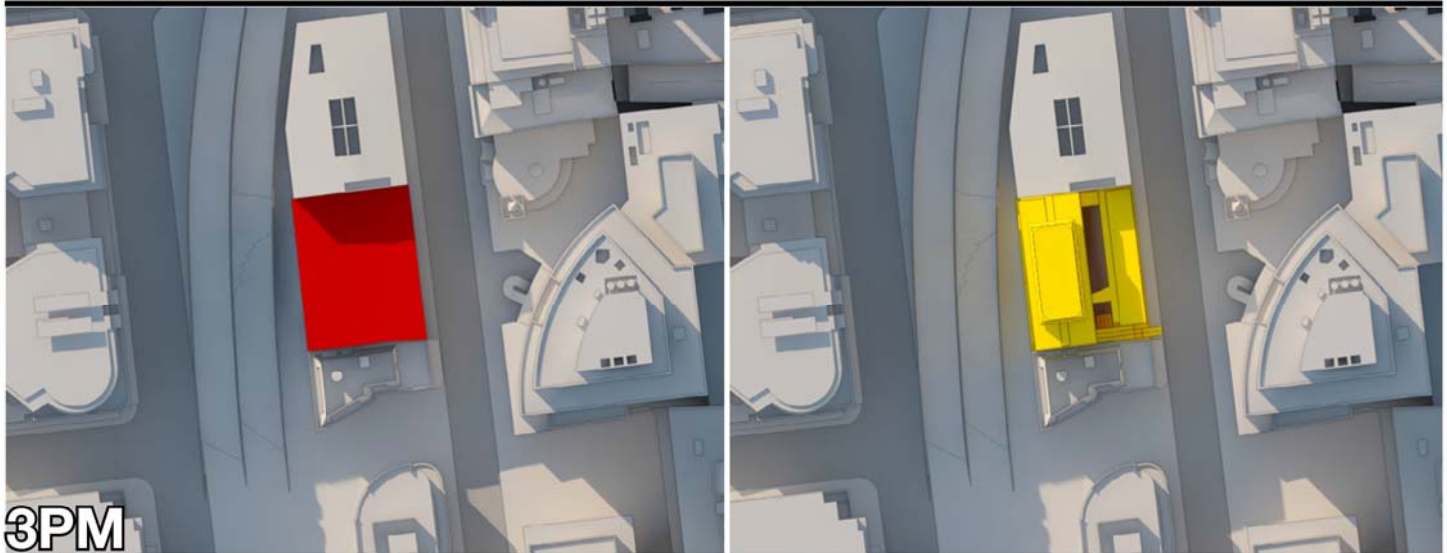
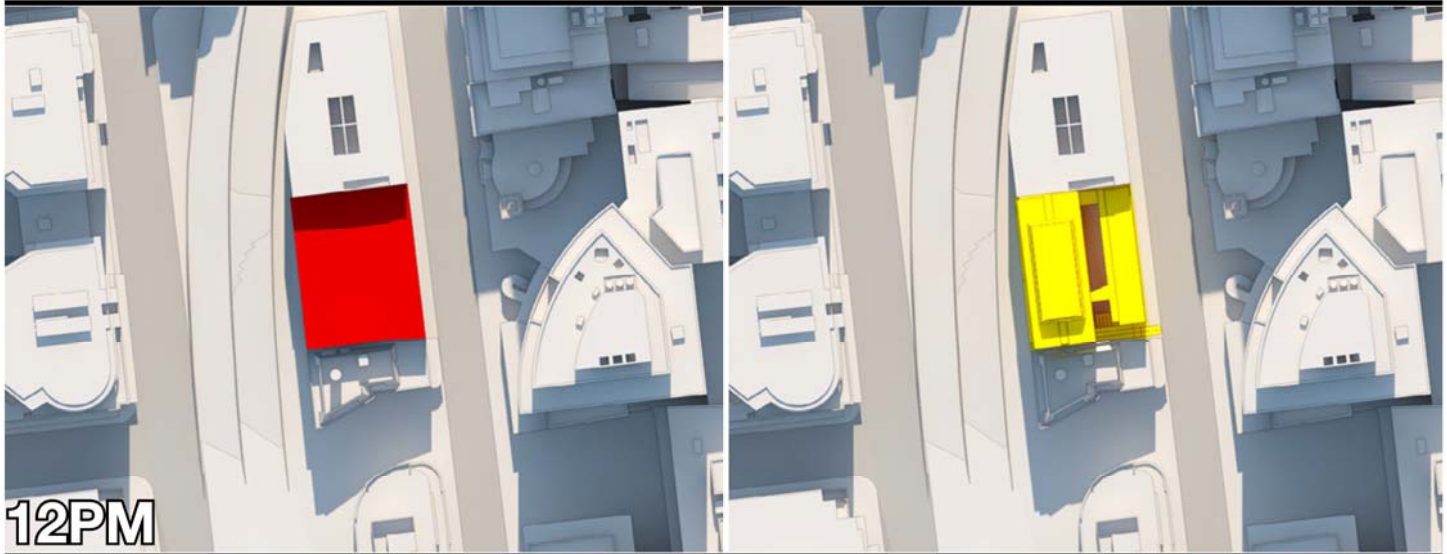
5 JULY

- COMPLIANT SCHEME
- NON COMPLIANT SCHEME



65-79 QUEST SUSSEX STRT, SYDNEY / SUN DIAGRAMS

ATTACHMENT A

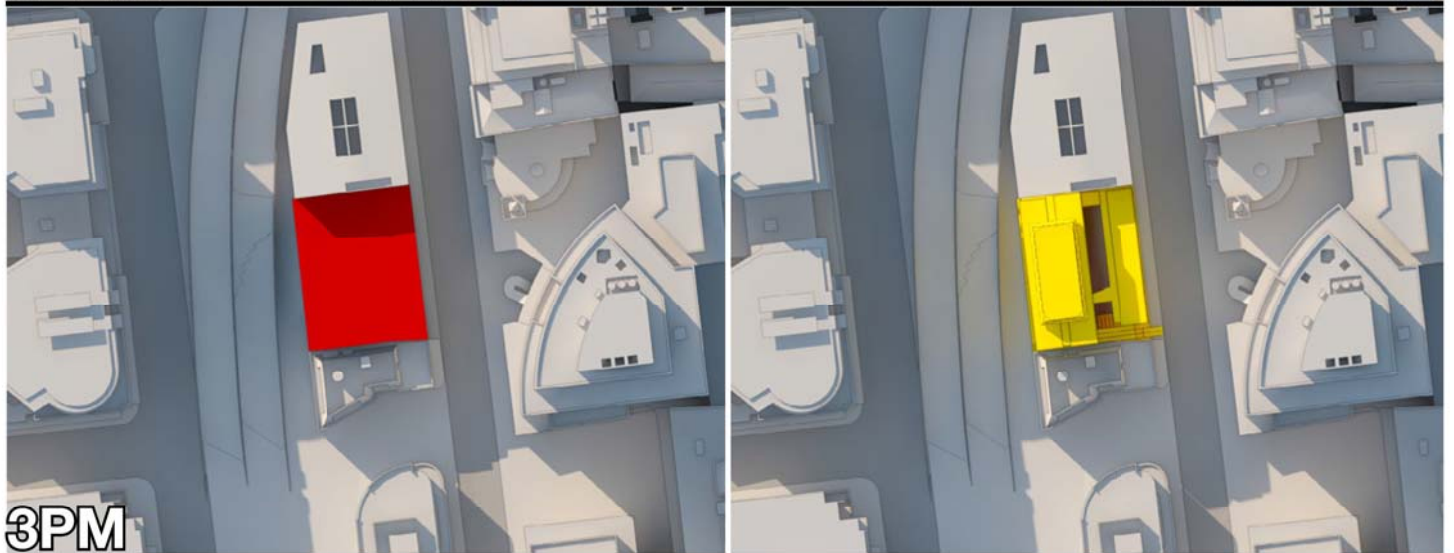


19 JULY

- COMPLIANT SCHEME
- NON COMPLIANT SCHEME



65-79 QUEST SUSSEX STRT, SYDNEY / SUN DIAGRAMS



2 AUGUST

- COMPLIANT SCHEME
- NON COMPLIANT SCHEME

